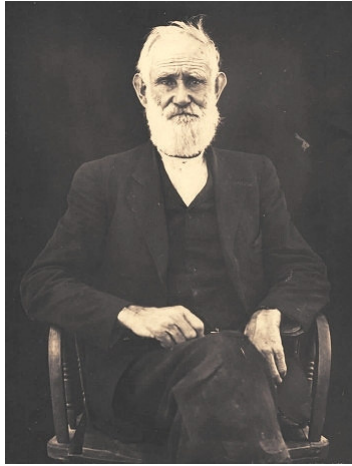


The Itawamba Historical Society...

preserving itawamba county's history and heritage

The Itawamba Historical Society is a non-profit Mississippi organization dedicated to preserving the rich history and heritage of Itawamba County, Mississippi. The society operates the George Poteet History Center, the Gaither Spradling Library and Historic



Bonds House Museum. This grass-roots organization also publishes Itawamba Settlers Magazine, a quarterly publication containing approximately 50 pages devoted to Itawamba County history and genealogy. Please take time to discover the Itawamba Historical Society.

THE GEORGE POTEET HISTORY CENTER

The George Poteet History Center, a state-of-the-art 2,400 square foot facility houses the society's Gordon McFerrin Assembly Hall where society meetings and programs are held. Also located in this facility are the society's offices and the Gaither Spradling Library.

When researching in Itawamba County, don't forget the Itawamba Historical Society's research collection housed in the Gaither Spradling Library at the corner of Church Street and Museum Drive in the historic section of Mantachie, Mississippi. Located in the Gaither Spradling Library are:

Books

There are more than 1,600 volumes of research material devoted not only to Itawamba County, but most all southern states as well. The society

subscribes to more than 30 regional genealogical publications. The society's book collections also includes general history and general genealogical areas.

Files

The society's filing system contains more than 3,000 files including family group sheets, pedigree charts, family histories, old photographs and general county histories

Maps

The society's filing system contains more than 300 maps including historic maps of southern states from ca. 1750 to the present, as well as maps of every county in Mississippi and historic maps of every state in the United States.



Archival Files

Located in the society's filing system are more than 1,000 pages of 19th century documents including old letters, bills of sale,

wills and ledgers pertaining to Itawamba County, Mississippi families.

Microform Records

The society's microform collection includes every available census of not only Itawamba County, but every surrounding county as well. The collection also houses every Itawamba County newspaper from 1903 to 1975, Itawamba County courthouse records, the complete Itawamba County WPA History Project, Lee County newspapers from the 1870's to the 1880's, slave schedule records, the 1890 Civil War veterans census of Itawamba County and genealogical publications on microform.

HISTORIC BONDS HOUSE

Bonds House, built ca. 1895 by Mantachie merchant and postmaster James Andrew Bonds, serves as the society's county museum of history. The architecture of this structure reflects the building style of Itawamba County rural farm

(continued on next page)



houses from the late 19th Century. Housed in this building are several archives rooms including the Delmus C. Harden Archives, the George Washington Owens Archives, the Ruth Boren Sheffield Archives and the James Grissom archives. The building houses artifacts from the early 1800s through the 20th Century. Located on the grounds of the structure are many Mississippi native plants and the Mollie Spradling Dulaney Prayer and Meditation Point, which overlooks Tishtontee Creek. Historic Bonds House is located adjacent to the George Poteet History Center and is open during regular society hours.

HISTORICAL SOCIETY PUBLICATIONS

The Itawamba Historical Society publishes Itawamba Settlers magazine. This 56-page quarterly membership magazine is now in its 24th year of publication. The magazine features abstracts of old county records such as wills, deeds, marriage records and other items of genealogical interest such as family histories, old photographs, family group records, church histories and so much more devoted entirely to Itawamba County, Mississippi history and genealogy. Each issue contains a query sections where members may have submitted queries published. The fourth issue of each year contains an annual surname index. The society has a limited supply of back issues available for sale to its membership. For further information about Itawamba Settlers or back issues, contact the Itawamba Historical Society, Post Office Box 7, Mantachie, MS 38855.



query sections where members may have submitted queries published. The fourth issue of each year contains an annual surname index. The society has a limited supply of back issues available for sale to its membership. For further information about Itawamba Settlers or back issues, contact the Itawamba Historical Society, Post Office Box 7, Mantachie, MS 38855.

HOW YOU CAN HELP

The Itawamba Historical Society receives all of its funding from membership dues and donations. Without its membership base, the society could not continue its work with historic records preservation or operate the society facilities. The Itawamba Historical Society's membership is composed of family researchers and history buffs from all across the United States. All members of the society receive Itawamba Settlers magazine, the 56-page quarterly journal devoted entirely to Itawamba County, Mississippi genealogy and history. All

members who join within the year receive all current year back issues. To join the Itawamba Historical Society, simply send your \$25 membership dues to: The Itawamba Historical Society, Post Office Box 7, Mantachie, MS 38855. There are other membership categories as well.

MEMBERSHIP CATEGORIES

Regular Membership.....	\$25
Sustaining Membership.....	\$50
Benefactor.....	\$100
Grand Benefactor.....	\$500
Corporate Sponsor.....	\$1000

All memberships include a year's subscription to Itawamba Settlers, the quarterly journal of Itawamba County, Mississippi History and Genealogy.

All memberships of Sustaining, Benefactor, Grand Benefactor and Corporate Sponsor includes a year's subscription to Itawamba Settlers magazine and a listing in the Roll of Honor in each issue of Itawamba Settlers magazine.

The Itawamba Historical Society is a Mississippi non-profit 501(c)3 organization. All donations to the society are tax exempt to the extent allowable by law.

**The Itawamba Historical Society
Corner of Church Street and Museum Drive
Post Office Box 7
Mantachie, Mississippi 38855
662-282-7664
<http://www.rootsweb.com/~msichs>**

Be sure to visit the Itawamba Historical Society online at <http://www.rootsweb.com/~msichs>. The society maintains an online Itawamba County archives where thousands of visitors each year research the county. The online archives contains thousands of historical and genealogical records of the county.

Please be sure to visit us in Itawamba County! Our hours are Tuesday through Friday from 10 am until 3 pm daily. To schedule an appointment at other hours, please contact the society.